



# UniFi

## Enterprise WiFi System

Models: UniFi AP (UAP), UniFi AP-Long Range (UAP-LR)

Unlimited AP Scalability in a Unified Management System

Powerful Hardware - 300 Mbps 802.11n MIMO WiFi Technology

Intuitive UniFi Controller Software



# Overview

## Scalable and Unified Enterprise WiFi Management

The UniFi Enterprise WiFi System is a scalable enterprise access point solution designed to be easily deployed and managed. The UniFi Access Point (UAP) and UniFi AP Long-Range (UAP-LR) have a sleek design and can be easily mounted to a ceiling tile or wall using the included mounting hardware. They are powered using the included Power over Ethernet (PoE) adapter so that you can provide power and data using a single cable.

The UniFi Enterprise WiFi System includes the UniFi Controller software. The software installs on any PC or Mac within the network and is easily accessible through any standard web browser. Using the UniFi Controller software, an Enterprise WiFi network can be instantly configured and administered without any special training. Real-time status, automatic UAP/UAP-LR device detection, map loading, and advanced security options are all seamlessly integrated.

### Features

**Design** Aesthetic industrial design with unique LED provisioning ring which provides an administrator location tracking and alerts for each device.

**Powerful Hardware** UAP/UAP-LR devices feature the latest in WiFi 802.11n MIMO technology -- capable of 300Mbps speeds with ranges up to 400 ft. (UAP) and 600 ft. (UAP-LR).

**Intuitive UniFi Controller Software** Install, configure, and manage all of your UAP/UAP-LR devices with the intuitive and easy-to-learn UniFi Controller software User Interface (no special training needed).

**Expandable** Unlimited scalability. Build your wireless networks as small or big as you need. Start with one (or upgrade to a 3-pack) and expand to thousands while maintaining a single unified management system.

**Easy Mounting** Sleek wall-mountable and ceiling tile mountable design (all accessories included).

**Power over Ethernet (PoE)** Includes Power Over Ethernet (POE) functionality which allows both power and data to be carried over a single Ethernet cable to the device.



### UniFi AP (UAP)

802.11n MIMO Access Point, our most affordable unit. Capable of 300+Mbps speeds and links of up to 400 ft.

UAP Available in 1-pack \$69 MSRP and 3-pack - \$199 MSRP

Included:

- Wall and Ceiling Mount Adapter Kit
- Power Over Ethernet Adapter
- UniFi Controller Software Installation CD



### UniFi AP-Long Range (UAP-LR)

Link 50% further than the base model UAP with UAP-LR. 802.11n MIMO, 300+Mbps speeds, 600 ft range.

UAP-LR Available in 1-pack and 3-pack

Included:

- Wall and Ceiling Mount Adapter Kit
- Power Over Ethernet Adapter
- UniFi Controller Software Installation CD

# UniFi Controller Software

## Packed with Features

After the UniFi Controller software is installed on a Mac or PC, the UniFi Controller can be accessed through any device using a web browser. The UniFi Controller allows the operator to instantly provision thousands of UAP/AP-LRs, map out networks, quickly manage system traffic, and further provision individual UAP/UAP-LR devices.

## Users and Guests

Keep track and control access of specific users/guests connected to your network(s).

## Remote Firmware Upgrade

Save time and effort by remotely upgrading the firmware of your devices.

## Guest Portal Support

Easy customization and advanced options for Guest Portals.

## Events and Alerts

UniFi makes it easy to keep track of alerts and recent events on your network(s).

## One Unified Network

Option to create one large wireless network across multiple APs that lets users seamlessly roam.

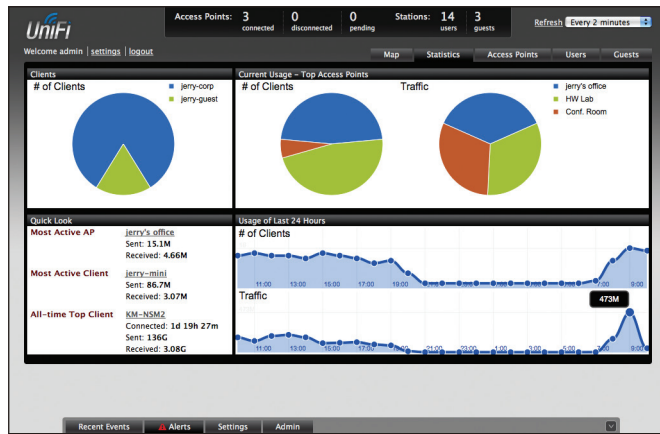
## Save money. Save time.

Unlike traditional enterprise WiFi systems utilizing a hardware WiFi Switch, UniFi uses a virtual client/server application that requires zero cost and no additional hardware.



## Maps

Upload map images of your location(s) for a visual representation of your wireless network.



## Statistics

UniFi organizes and visualizes your network(s) traffic in clear and easy-to-read graphs.

Name/MAC Address	IP Address	Status	Num Clients	Download	Upload	Channel	Actions
HW Lab	192.168.0.172	Connected	3	7.66G	950M	6 (ng)	Restart   Locate   Upgrade
UAP-LR	192.168.1.129	Connected	20	11.4G	1.80G	1 (ng)	Restart   Locate   Upgrade
Jerry's Office	192.168.1.135	Disconnected	0.00	0.00			

Section	Item	Action
Server Information	Version	1.2.0
	Backup	Download   Download Backup Settings
Restore	Browse	Choose File   No file chosen
	Support Info	Download   Download Support Info

## Access Points (APs)

Easily install, configure, and manage all of your access points from one location.

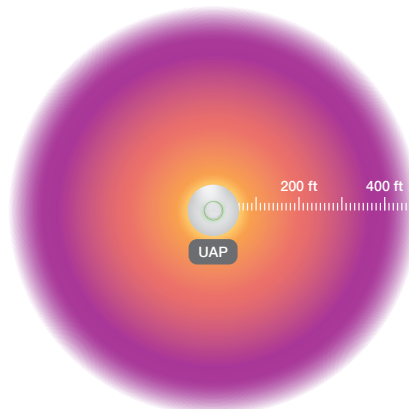
# Specifications

UniFi AP (UAP) Specifications	
Dimensions	20 x 20 x 3.65 cm
Weight	290 g (430 g with mounting kits)
Ports	Ethernet (Auto MDX, autosensing 10/100 Mbps)
Buttons	Reset
Antennas	2 Integrated (supports 2x2 MIMO with spatial diversity)
Wi-Fi Standards	802.11 b/g/n*
Power Method	Passive Power over Ethernet (12-24V)
Power Supply	24V 0.5A PoE Adapter included
Maximum Power Consumption	4W
Max TX Power	20 dBm
BSSID	Up to four per radio
Power Save	Supported
Wireless Security	WEP, WPA-PSK, WPA-TKIP, WPA2 AES, 802.11i
Certifications	CE, FCC, IC
Mounting	Wall/Ceiling (Kits included)
Operating Temperature	-10 to 70°C (14 to 158° F)
Operating Humidity	5 - 80% Condensing

Advanced Traffic Management	
VLAN	802.1Q
Advanced QoS	WLAN prioritization
Guest traffic isolation	Supported
WMM	Voice, video, best effort, and background
Concurrent Clients	100+

Supported Data Rates (Mbps)	
Frequency (MHz)	
802.11n	MCS0 - MCS15 (6.5 Mbps to 300 Mbps), HT 20/40
802.11b	1, 2, 5.5, 11
802.11g	6, 9, 12, 18, 24, 36, 48, 54

\* 2.4GHz



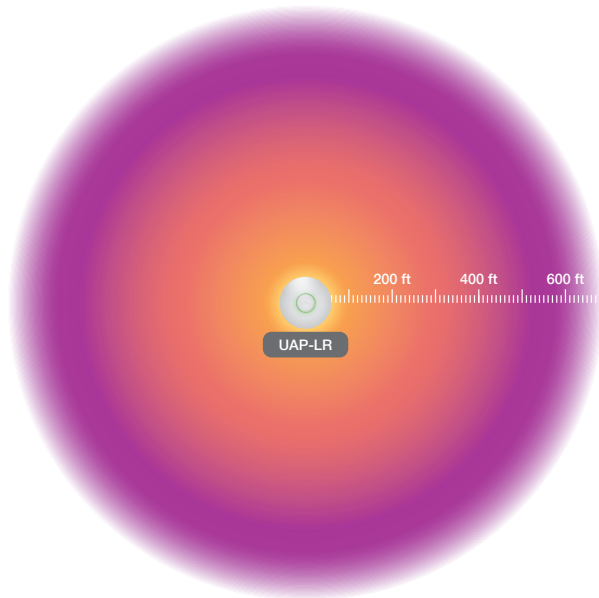
# Specifications

UniFi AP Long-Range (UAP-LR) Specifications	
Dimensions	20 x 20 x 3.65 cm
Weight	290 g (430 g with mounting kits)
Ports	Ethernet (Auto MDX, autosensing 10/100 Mbps)
Buttons	Reset
Antennas	2 Integrated (supports 2x2 MIMO with spatial diversity)
Wi-Fi Standards	802.11 b/g/n*
Power Method	Passive Power over Ethernet (12-24V)
Power Supply	24V 0.5A PoE Adapter included
Maximum Power Consumption	6W
Max TX Power	27 dBm
BSSID	Up to four per radio
Power Save	Supported
Wireless Security	WEP, WPA-PSK, WPA-TKIP, WPA2 AES, 802.11i
Certifications	CE, FCC, IC
Mounting	Wall/Ceiling (Kits included)
Operating Temperature	-10 to 70°C (14 to 158° F)
Operating Humidity	5 - 80% Condensing

Advanced Traffic Management	
VLAN	802.1Q
Advanced QoS	WLAN prioritization
Guest traffic isolation	Supported
WMM	Voice, video, best effort, and background
Concurrent Clients	100+

Supported Data Rates (Mbps)	
Frequency (MHz)	
802.11n	MCS0 - MCS15 (6.5 Mbps to 300 Mbps), HT 20/40
802.11b	1, 2, 5.5, 11
802.11g	6, 9, 12, 18, 24, 36, 48, 54

\* 2.4GHz



# TOUGH Cable

OUTDOOR CARRIER CLASS SHIELDED

Protect your networks from the most brutal environments with Ubiquiti's industrial-grade shielded Ethernet cable, TOUGH Cable.

**Increase Performance** Dramatically improve your Ethernet link states, speeds, and overall performance with Ubiquiti TOUGH Cables.

**Extreme Weatherproof** TOUGH Cables have been built to perform even in the harshest weather and environments.

**ESD Damage Protection** Protect your networks from devastating electrostatic discharge (ESD) attacks.

**Extended Cable Support** TOUGH Cables have been developed to have increased power handling performance for extended cable run lengths.

## Bulletproof your networks

TOUGH Cable is currently available in two versions: Level 1 Shielding Protection and Level 2 Shielding Protection.

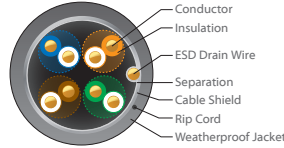
**Level 1** is a Category 5e outdoor carrier-class shielded cable.

**Level 2** is a Category 5e outdoor carrier-class shielded cable that features an Anti-Crosstalk Divider, additional shielding and is rated to provide optimal performance on Gigabit Ethernet networks.

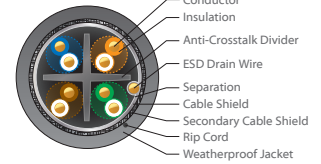
### Additional Information:

- 24 AWG copper conductor pairs
- 26 AWG integrated ESD drain wire to prevent ESD attacks & damage
- PE outdoor-rated weatherproof jacket
- Multi-layered shielding
- Available in 1000 ft (304.8 m) length

### LEVEL 1 SHIELDING PROTECTION



### LEVEL 2 SHIELDING PROTECTION

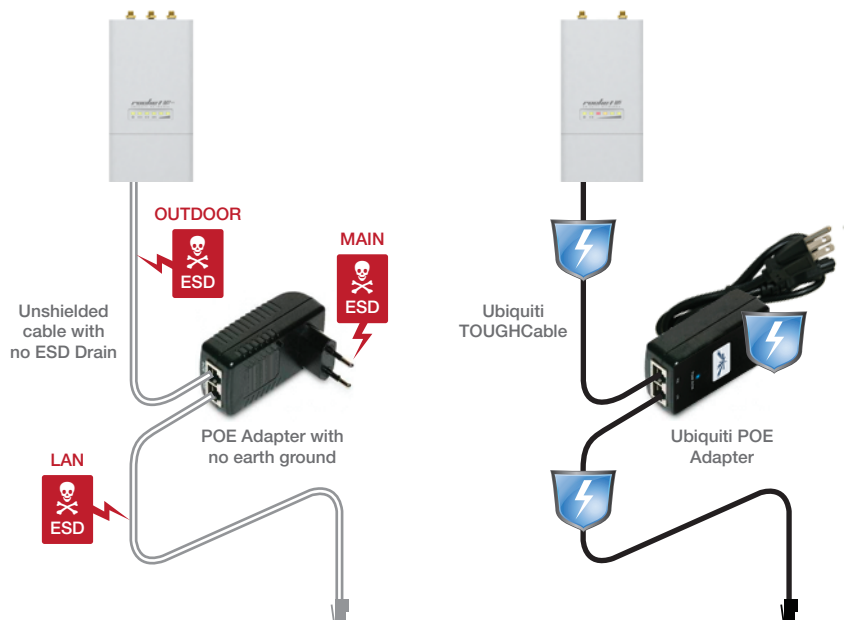


## TOUGH Cable Connectors

Specifically designed for use with Ubiquiti TOUGH Cables and available in 100 pc. bags, TOUGH Cable Connectors protect against ESD attacks and Ethernet hardware damage while allowing rapid field deployment without soldering.

ESD attacks are overwhelmingly the leading cause for device failures. The diagram below illustrates the areas vulnerable to ESD Attacks in a defenseless network.

By using a grounded Ubiquiti Power over Ethernet (PoE) adapter along with Ubiquiti TOUGH Cable and TOUGH Cable Connectors, you can effectively protect against ESD attacks.





TERMS OF USE: The Ubiquiti radio device must be professionally installed. Shielded Ethernet cable and earth grounding must be used as conditions of product warranty. It is the installers responsibility to follow local country regulations including operation within legal frequency channels, output power, and Dynamic Frequency Selection (DFS) requirements.

For further information, please visit [www.ubnt.com](http://www.ubnt.com).

All specifications in this document are subject to change without notice.

© 2011 Ubiquiti Networks, Inc. All rights reserved

MA080111

 [www.ubnt.com](http://www.ubnt.com)