



Power AP N 802.11n

Indoor Ultra-Long
Range 802.11n
300Mbps WiFi
Access Point

QUICK START GUIDE

Package Contents



Power AP N



Power Adapter



Ethernet Cable



Antennas (Qty. 2)



Quick Start Guide

System Requirements

- Microsoft Windows XP, Windows Vista, Windows 7, Linux, or Mac OS X
- Java Runtime Environment 1.6 (or above) for the *AirView* utility
- Web Browser: Mozilla Firefox, Apple Safari, or Microsoft Internet Explorer

Hardware Installation

To install the Power AP N, perform the following steps:

1. Connect each antenna to an antenna connector on the Power AP N by rotating it clockwise.



2. Raise each antenna to an upright position.



3. Connect the power adapter to the power port on the Power AP N. Connect the other end to a power outlet.



4. Connect an Ethernet cable to Ethernet port 1.



5. Connect the other end of the Ethernet cable to your computer.



6. Launch your Web browser and type **http://192.168.1.1** in the address field and press enter (PC) or return (Mac).

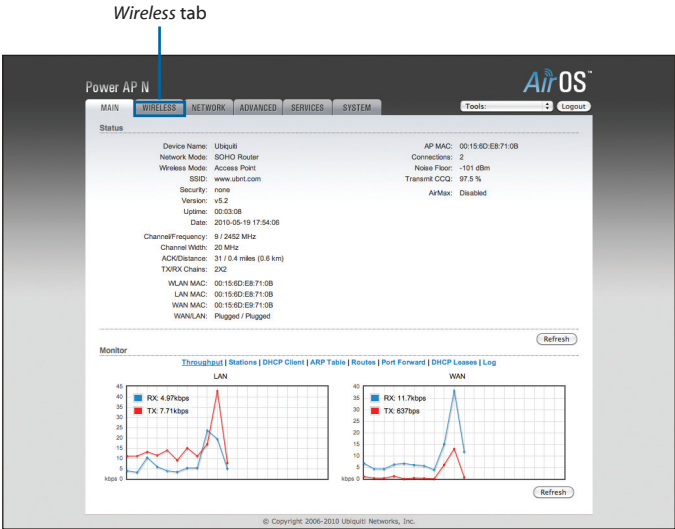


Note: Your computer needs to be on the 192.168.1.x subnet. If you have DHCP enabled on your Ethernet adapter, it should receive an address automatically. If not, you will need to set a static IP address in the 192.168.1.2 - 192.168.1.254 range.

7. The login screen will appear. Enter **ubnt** in the *Username* and *Password* fields and click **Login**.



8. The AirOS interface will appear. Go to the **Wireless** tab.



9. Customize your wireless network and secure your network by entering the basic wireless network information:

The screenshot shows the configuration page for a Power AP N. The interface includes a navigation menu with tabs for MAIN, WIRELESS, NETWORK, ADVANCED, SERVICES, and SYSTEM. The 'WIRELESS' tab is selected. The page title is 'Power AP N' and the logo 'AirOS™' is in the top right. There are 'Tools' and 'Logout' links. The main content area is titled 'Basic Wireless Settings' and contains the following fields:

- Wireless Mode: Access Point (dropdown)
- SSID: www.abnt.com (text input) with a 'Hide SSID' checkbox
- Country Code: United States (dropdown)
- IEEE 802.11 Mode: B/C/N mixed (dropdown)
- Channel Width: 20 MHz (dropdown)
- Channel Shifting: Disabled (dropdown)
- Frequency, MHz: 2412 (dropdown) with an 'Obey Regulatory Rules' checkbox
- Extension Channel: None (dropdown)
- Output Power: 28 dBm (slider)
- Max TX Rate, Mbps: MCS 15 - 130 (dropdown) with an 'Automatic' checkbox

Below this is the 'Wireless Security' section with the following fields:

- Security: none (dropdown)
- MAC ACL: Enabled (checkbox)

A 'Change' button is located at the bottom right of the configuration area. At the bottom of the page, there is a copyright notice: '© Copyright: 2006-2010 Ubiquiti Networks, Inc.'

- Enter a name for your wireless network in the *SSID* field.
- Select the type of security that you want to use for your wireless network from the *Security* drop-down.



Note: WPA2-AES security is the strongest wireless security method. If all of your devices support this option, it is recommended that you select it.

- Enter a passphrase in the **WPA Preshared Key** field. You can click the *Show* option to see the characters that you are typing.
 - Click **Change**. You will be prompted to apply the changes. To proceed, click **Apply**.
10. If necessary, disconnect the power and Ethernet cables to move the router so that you can connect it to your Internet connection.



11. Connect an Ethernet cable from your broadband modem or other Internet connection to the silver port on the back of the Power AP N.





Congratulations! Basic router installation is complete. The next page provides information for connecting wireless clients.

Connecting a Wireless Client to the Power AP N

Windows

1. Go to *Connect to Network*.
 - **Windows 7** Right-click on the *Network*  icon.
 - **Windows Vista** Go to **Start > Connect To**.
 - **Windows XP** Right-click the *Wireless Network*  icon in the *System Tray* (lower right corner of the screen) and then click **View Available Wireless Networks**.
2. Select the wireless network (SSID) that you entered in the *SSID* field in step 9a and then click **Connect**.
3. Type the passphrase that you entered in the *WPA Preshared Key* field in step 9c and click **OK** or **Connect**.
4. Launch your web browser to begin browsing the web.

Mac

1. Click the *AirPort*  icon in the menu bar (top left side of the screen).
2. Select the wireless network (SSID) that you entered in the *SSID* field in step 9a.
3. Type the passphrase that you entered in the *WPA Preshared Key* field in step 9c and click **OK**.
4. Once connected the *AirPort*  icon will change from gray to solid black. The number of black lines indicates the signal strength. Launch your web browser to begin browsing the web.

General Warranty

UBIQUITI NETWORKS, Inc (“UBIQUITI NETWORKS”) represents and warrants that the Products furnished hereunder shall be free from defects in material and workmanship for a period of one (1) year from the date of shipment by UBIQUITI NETWORKS under normal use and operation. UBIQUITI NETWORKS sole and exclusive obligation under the foregoing warranty shall be to repair or replace, at its option, any defective Product that fails during the warranty period. The expense of removal and reinstallation of any item is not included in this warranty.

The foregoing warranty is exclusive and in lieu of all other warranties, express or implied, including the implied warranties of merchantability and fitness for a particular purpose and any warranties arising from a course of dealing, usage or trade practice with respect to the products. Repair or replacement in the manner provided herein shall be the sole and exclusive remedy of Buyer for breach of warranty and shall constitute fulfillment of all liabilities of UBIQUITI NETWORKS with respect to the quality and performance of the Products. UBIQUITI NETWORKS reserves the right to inspect all defective Products (which must be returned by Buyer to UBIQUITI NETWORKS factory freight prepaid).

No Products will be accepted for replacement or repair without obtaining a Return Materials Authorization (RMA) number from UBIQUITI NETWORKS. Products returned without an RMA number will not be processed and will be returned to Buyer freight collect. UBIQUITI NETWORKS shall have no obligation to make repairs or replacement necessitated by catastrophe, fault, negligence, misuse, abuse, or accident by Buyer, Buyer’s customers or any other parties. The warranty period of any repaired or replaced Product shall not extend beyond its original term.

Warranty Conditions

The foregoing warranty shall apply only if:

- (I) The Product has not been subjected to misuse, neglect or unusual physical, electrical or electromagnetic stress, or some other type of accident.
- (II) No modification, alteration or addition has been made to the Product by persons other than UBIQUITI NETWORKS or UBIQUITI NETWORK'S authorized representatives or otherwise approved by UBIQUITI NETWORKS.
- (III) The Product has been properly installed and used at all times in accordance, and in all material respects, with the applicable Product documentation.

Disclaimer: UBIQUITI NETWORKS does not warrant that the operation of the products is error-free or that operation will be uninterrupted. In no event shall UBIQUITI NETWORKS be responsible for damages or claims of any nature or description relating to system performance, including coverage, buyer's selection of products for buyer's application and/or failure of products to meet government or regulatory requirements.

Returns

In the unlikely event a defect occurs, please work through the dealer or distributor from which this product was purchased.

Declaration of Conformity

Česky [Czech]	UBIQUITI NETWORKS tímto prohlašuje, a tento UBIQUITI NETWORKS device, je ve shodě se základními požadavky a dále s ostatními ustanoveními směrnice 1999/5/ES.
Dansk [Danish]	Undertegnede UBIQUITI NETWORKS erklærer herved, at følgende udstyr UBIQUITI NETWORKS device, overholder de væsentlige krav og øvrige relevante krav i direktiv 1999/5/EF.
Nederlands [Dutch]	Hierbij verklaart UBIQUITI NETWORKS dat het toestel UBIQUITI NETWORKS device, in overeenstemming is met de essentiële eisen en de andere relevante bepalingen van richtlijn 1999/5/EG. Bij deze verklaart UBIQUITI NETWORKS dat deze UBIQUITI NETWORKS device, voldoet aan de essentiële eisen en aan de overige relevante bepalingen van Richtlijn 1999/5/EC.
English	Hereby, UBIQUITI NETWORKS, declares that this UBIQUITI NETWORKS device, is in compliance with the essential requirements and other relevant provisions of Directive 1999/5/EC.
Eesti [Estonian]	Käesolevaga kinnitab UBIQUITI NETWORKS seadme UBIQUITI NETWORKS device, vastavust direktiivi 1999/5/EÜ põhinõuetele ja nimetatud direktiivist tulenevatele teistele asjakohastele sätetele.
Suomi [Finnish]	UBIQUITI NETWORKS vakuuttaa täten että UBIQUITI NETWORKS device, tyypinen laite on direktiivin 1999/5/EY oleellisten vaatimusten ja sitä koskevien direktiivin muiden ehtojen mukainen.
Français [French]	Par la présente UBIQUITI NETWORKS déclare que l'appareil UBIQUITI NETWORKS device est conforme aux exigences essentielles et aux autres dispositions pertinentes de la directive 1999/5/CE. Par la présente, UBIQUITI NETWORKS déclare que ce UBIQUITI NETWORKS device, est conforme aux exigences essentielles et aux autres dispositions de la directive 1999/5/CE qui lui sont applicables.
Deutsch [German]	Hiermit erklärt UBIQUITI NETWORKS, dass sich diese UBIQUITI NETWORKS device, in Übereinstimmung mit den grundlegenden Anforderungen und den anderen relevanten Vorschriften der Richtlinie 1999/5/EG befindet". (BMW i) Hiermit erklärt UBIQUITI NETWORKS die Übereinstimmung des Gerätes UBIQUITI NETWORKS device, mit den grundlegenden Anforderungen und den anderen relevanten Festlegungen der Richtlinie 1999/5/EG. (Wien)
Ελληνική [Greek]	ΜΕ ΤΗΝ ΠΑΡΟΥΣΑ UBIQUITI NETWORKS ΔΗΛΩΝΕΙ ΟΤΙ UBIQUITI NETWORKS device, ΣΥΜΜΟΡΦΩΝΕΤΑΙ ΠΡΟΣ ΤΙΣ ΟΥΣΙΩΔΕΙΣ ΑΠΑΙΤΗΣΕΙΣ ΚΑΙ ΤΙΣ ΛΟΙΠΕΣ ΣΧΕΤΙΚΕΣ ΔΙΑΤΑΞΕΙΣ ΤΗΣ ΟΔΗΓΙΑΣ 1995/5/ΕΚ.

Magyar [Hungarian]	Alulírott, UBIQUITI NETWORKS nyilatkozom, hogy a UBIQUITI NETWORKS device, megfelel a vonatkozó alapvető követelményeknek és az 1999/5/EC irányelv egyéb előírásainak.
Íslenska [Icelandic]	Hér me lí sír UBIQUITI NETWORKS yfir ví a UBIQUITI NETWORKS device, er í samræmi við grunnkröfur og a rar kröfur, sem ger ar eru í tilskipun 1999/5/EC.
Italiano [Italian]	Con la presente UBIQUITI NETWORKS dichiara che questo UBIQUITI NETWORKS device, è conforme ai requisiti essenziali ed alle altre disposizioni pertinenti stabilite dalla direttiva 1999/5/CE.
Latviski [Latvian]	Ar o UBIQUITI NETWORKS deklar , ka UBIQUITI NETWORKS device, atbilst Direkt vas 1999/5/EK b tiskaj m pras b m un citiem ar to saist tajiem noteikumiem.
Lietuviškai [Lithuanian]	UBIQUITI NETWORKS deklaruoja, kad šis UBIQUITI NETWORKS įrenginys atitinka esminius reikalavimus ir kitas 1999/5/EB Direktyvos nuostatas.
Malti [Maltese]	Hawnhekk, UBIQUITI NETWORKS, jiddikjara li dan UBIQUITI NETWORKS device, jikkonforma mal- ti ijjiet essenzjali u ma provvedimenti o rajn relevanti li hemm fid-Direttiva 1999/5/EC.
Norsk [Norwegian]	UBIQUITI NETWORKS erklærer herved at utstyret UBIQUITI NETWORKS device, er i samsvar med de grunnleggende krav og øvrige relevante krav i direktiv 1999/5/EF.
Slovensky [Slovak]	UBIQUITI NETWORKS t mto vyhlasuje, e UBIQUITI NETWORKS device, sp a základné po iadavky a v etky príslu né ustanovenia Smernice 1999/5/ES.
Svenska [Swedish]	Härmed intygar UBIQUITI NETWORKS att denna UBIQUITI NETWORKS device, står i överensstämmelse med de väsentliga egenskapskrav och övriga relevanta bestämmelser som framgår av direktiv 1999/5/EG.
Español [Spanish]	Por medio de la presente UBIQUITI NETWORKS declara que el UBIQUITI NETWORKS device, cumple con los requisitos esenciales y cualesquiera otras disposiciones aplicables o exigibles de la Directiva 1999/5/CE.
Polski [Polish]	Niniejszym, firma UBIQUITI NETWORKS o wiadcza, e produkt serii UBIQUITI NETWORKS device, spełnia zasadnicze wymagania i inne istotne postanowienia Dyrektywy 1999/5/EC.
Português [Portuguese]	UBIQUITI NETWORKS declara que este UBIQUITI NETWORKS device, está conforme com os requisitos essenciais e outras disposições da Directiva 1999/5/CE.

Ubiquiti Networks Support

Email: **support@ubnt.com**

Phone (9 a.m. - 5 p.m. PST): **408-942-1153**

Skype: **Ubiquiti_Support**

Online Resources

Wiki Page: **www.ubnt.com/wiki**

Support Forum: **www.ubnt.com/forum**

Knowledge Base: **www.ubnt.com/kb**

Downloads: **www.ubnt.com/support/downloads**

