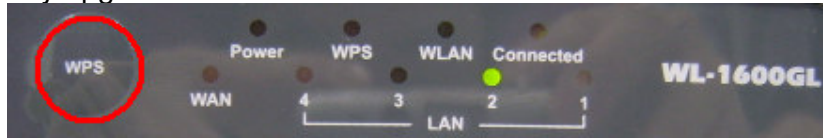


How to update WL1600GL to third party firmware

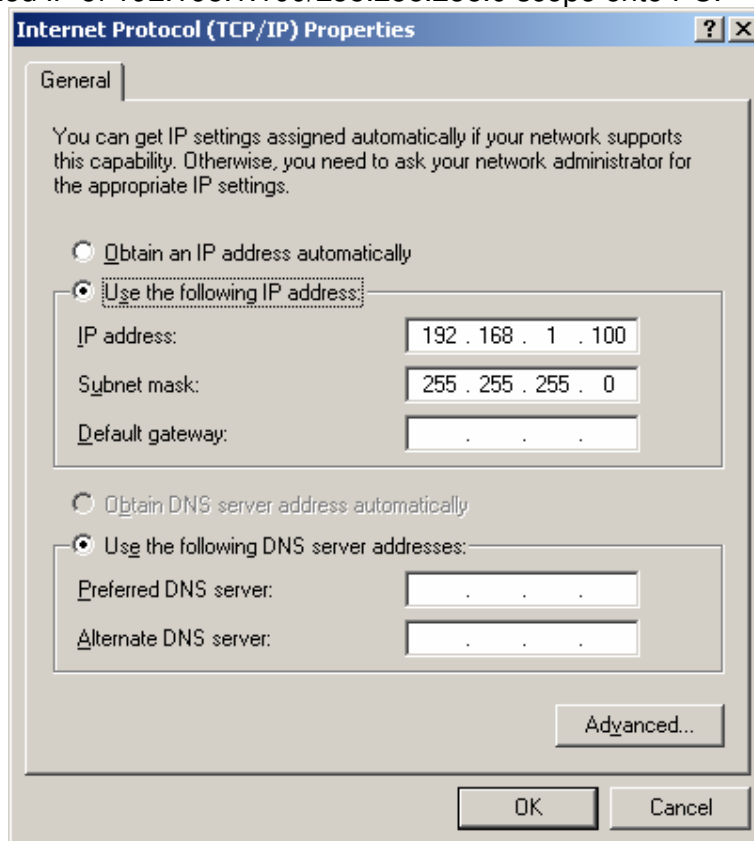
Operate on the Device:

1. Connect the Ethernet cable exactly to LAN port of WL-1600GL.
2. Connect the other end of cable *DIRECTLY* to the PC.
3. Please make sure the power jack is **NOT** plug in
4. Please push and hold the WPS Button, then plug-in the power to the router. Hold the WPS button until all LED are off except the LAN LED. Your router is now ready for emergency upgrade.

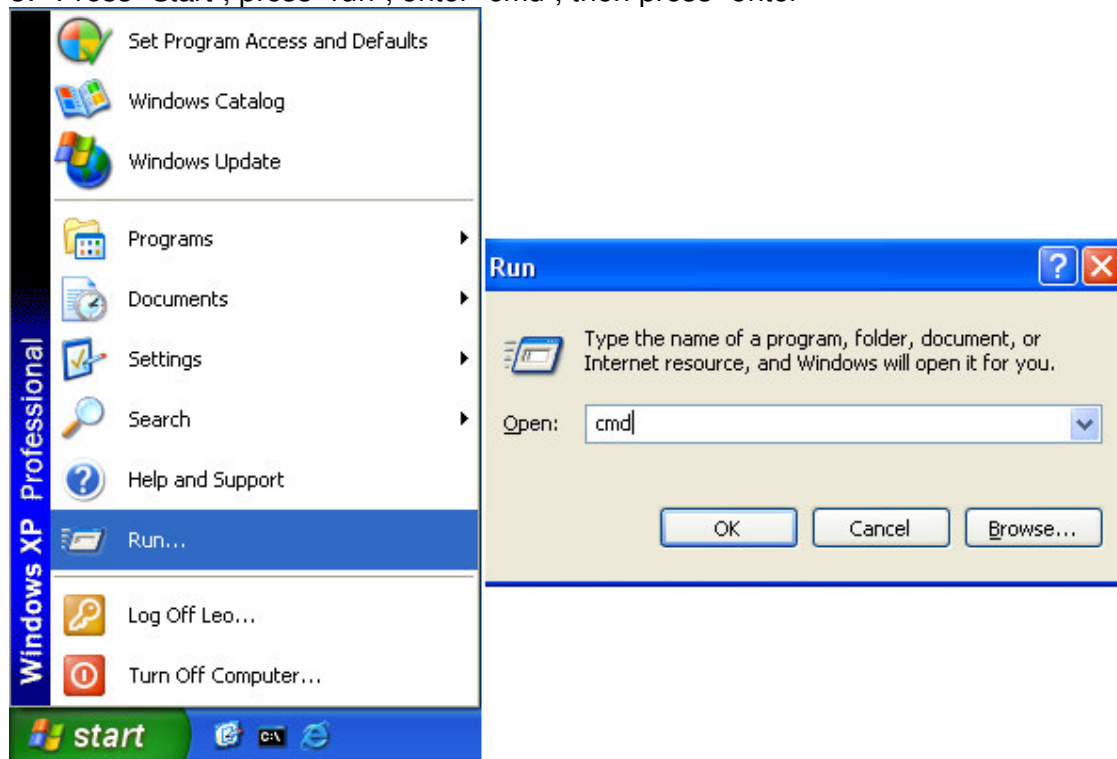


Operate on windows system:

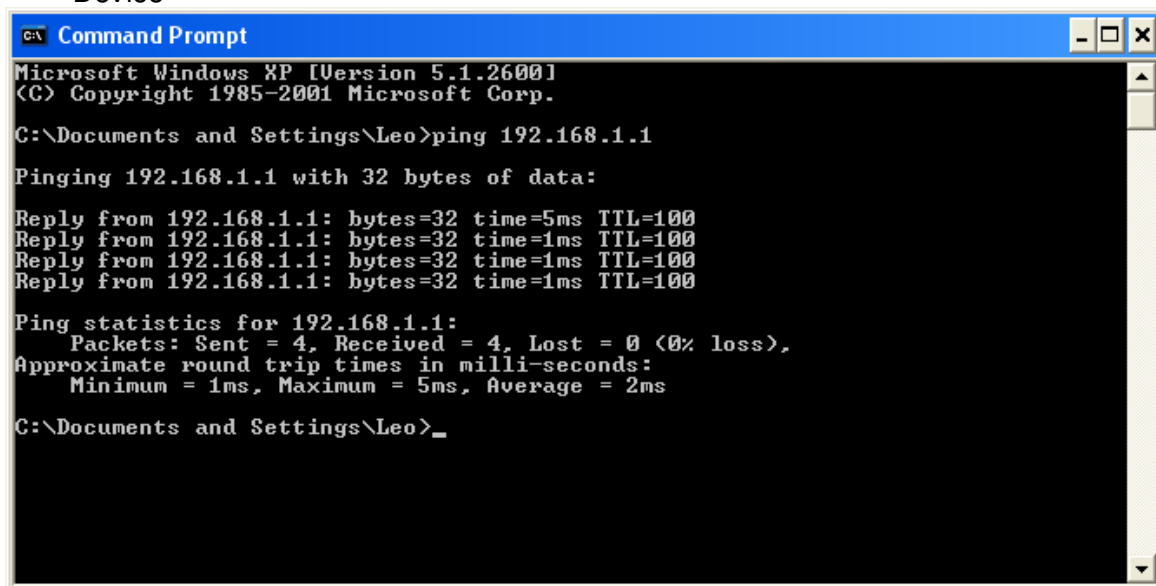
1. Right click on "Network" -> "Properties" -> "Internet protocol (TCP/IP)properties" on computer.
2. Assign fixed IP of 192.168.1.100/255.255.255.0 scope onto PC.



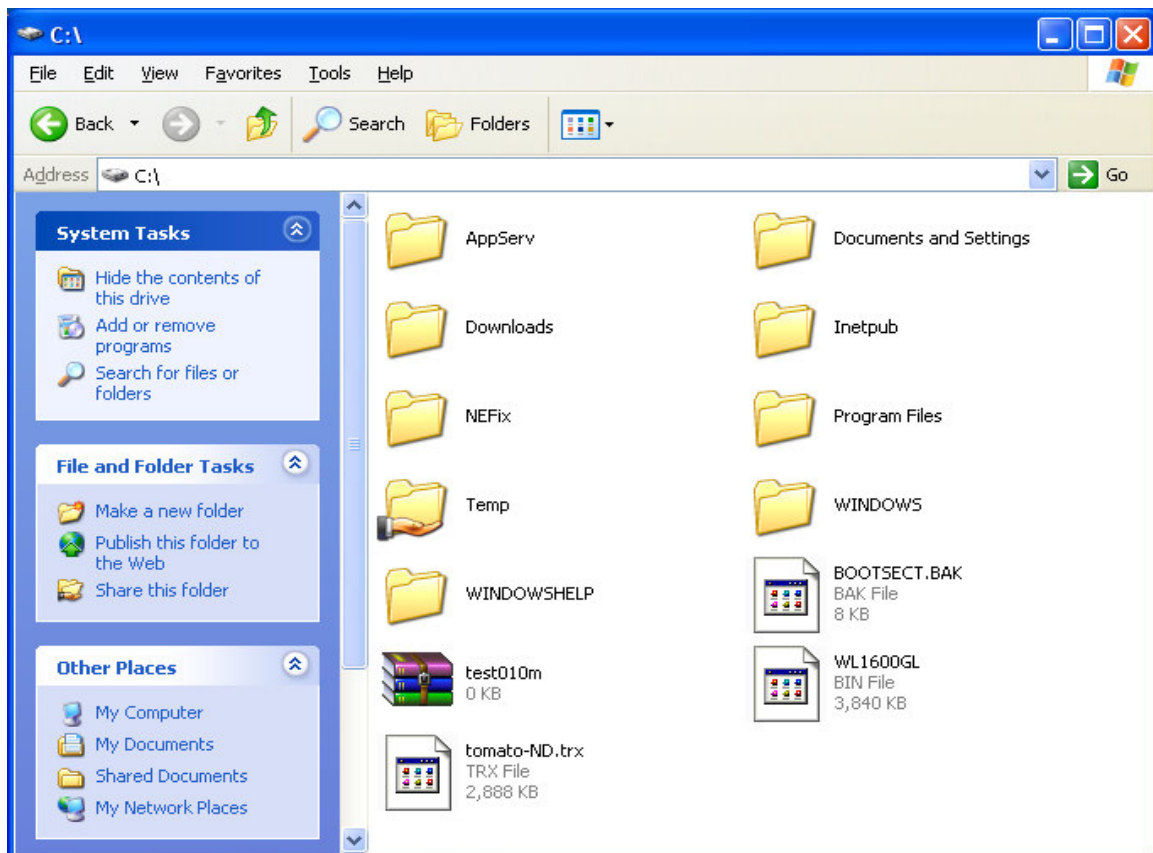
3. Press “Start”, press “run”, enter “cmd”, then press “enter”



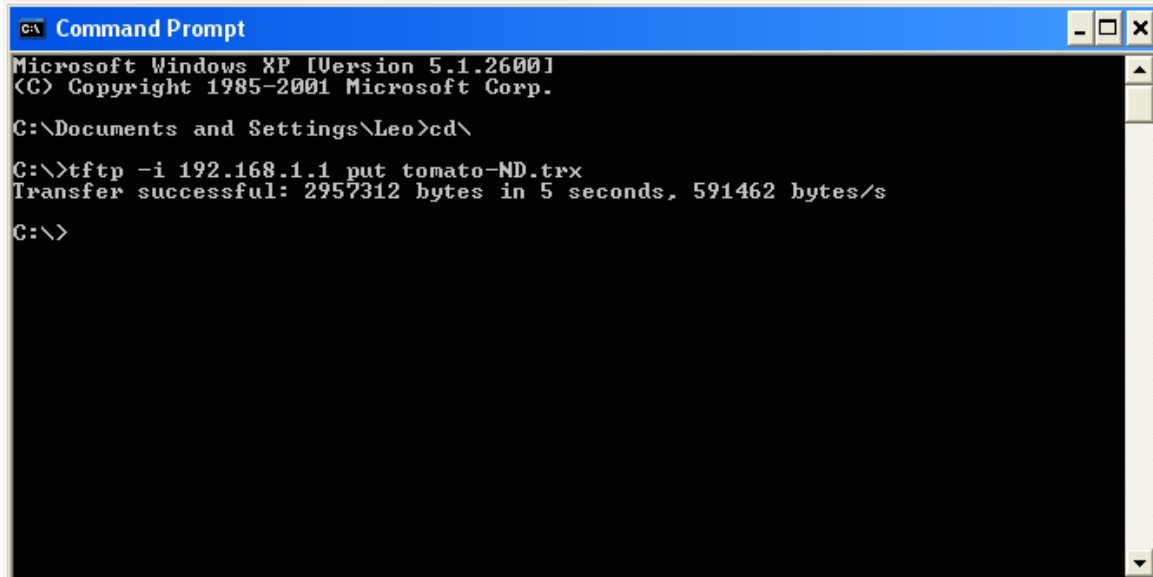
4. Ping the WL-1600GL tftp 192.168.1.1 , if no reply please retry “Operate on the Device”



5. Copy the tomato-ND.trx to C:\



6. Type "cd\" into `C:\ >` , type "tftp -i 192.168.1.1 put tomato-ND.trx", then press Enter



When return "Transfer successful: ** bytes in * seconds" your device receive data through TFTP client, please wait a few minutes. Device will update flash and then reboot itself.

7. WL-1600GL will replace into third party firmware

The screenshot shows the Tomato firmware status overview page in Microsoft Internet Explorer. The browser window title is "[tomato] Status: Overview - Microsoft Internet Explorer" and the address bar shows "http://192.168.1.1/". The page has a red header with "Tomato Version 1.22". A left sidebar contains navigation links: Status (Overview, Device List, Logs), Bandwidth (Real-Time, Last 24 Hours, Daily, Weekly, Monthly), Tools (Ping, Trace, Wireless Survey, WOL), Basic (Advanced, Port Forwarding, QoS, Access Restriction), Administration (About, Reboot...), and buttons for Renew and Release. The main content area is titled "System" and "tomato" and displays the following information:

Name	tomato
Model	Broadcom 5/0x048e/8/0x11/0x20750
Time	Not Available
Uptime	0 days, 00:07:03
CPU Load (1 / 5 / 15 mins)	0.00 / 0.00 / 0.00
Total / Free Memory	14.14 MB / 5,760.00 KB (39.77%)

Below the System section is the "WAN" section:

MAC Address	00:90:4C:C0:00:09
Connection Type	DHCP
IP Address	0.0.0.0
Subnet Mask	0.0.0.0
Gateway	0.0.0.0
DNS	
MTU	1500

The WAN status is "Renewing...".

Status	Renewing...
Connection Uptime	-
Remaining Lease Time	0 days, 00:00:00

At the bottom of the WAN section are buttons for "Renew" and "Release".