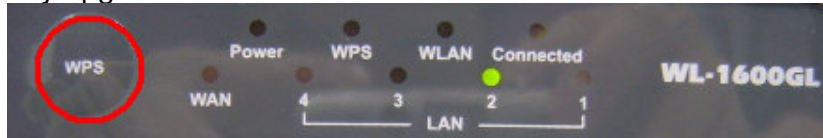


How to use Emergency code Firmware Recovery

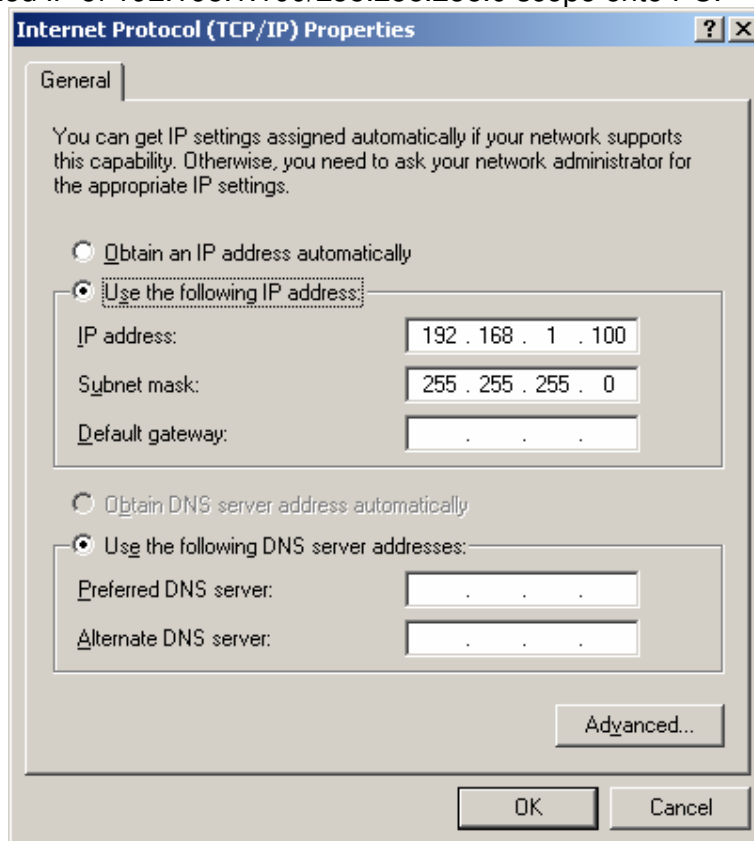
Operate on the Device:

1. Connect the Ethernet cable exactly to LAN port of WL-1600GL.
2. Connect the other end of cable *DIRECTLY* to the PC.
3. Please make sure the power jack is **NOT** plug in
4. Please push and hold the WPS Button, then plug-in the power to the router. Hold the WPS button until all LED are off except the LAN LED. Your router is now ready for emergency upgrade.

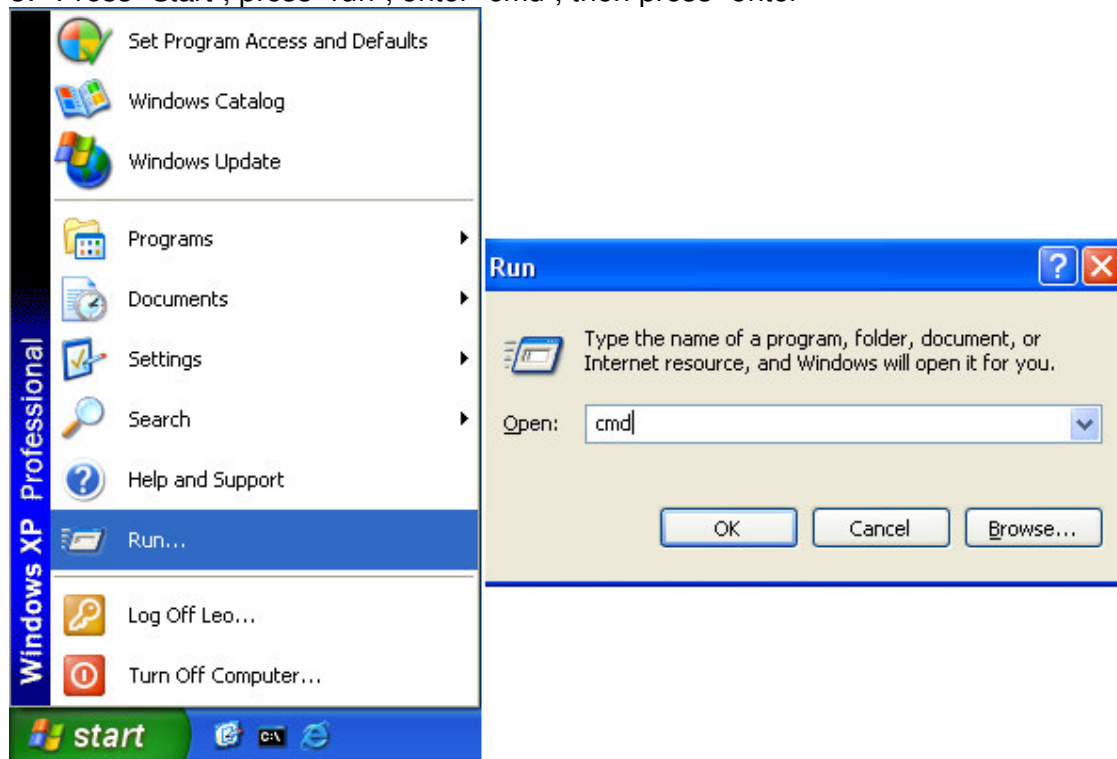


Operate on windows system:

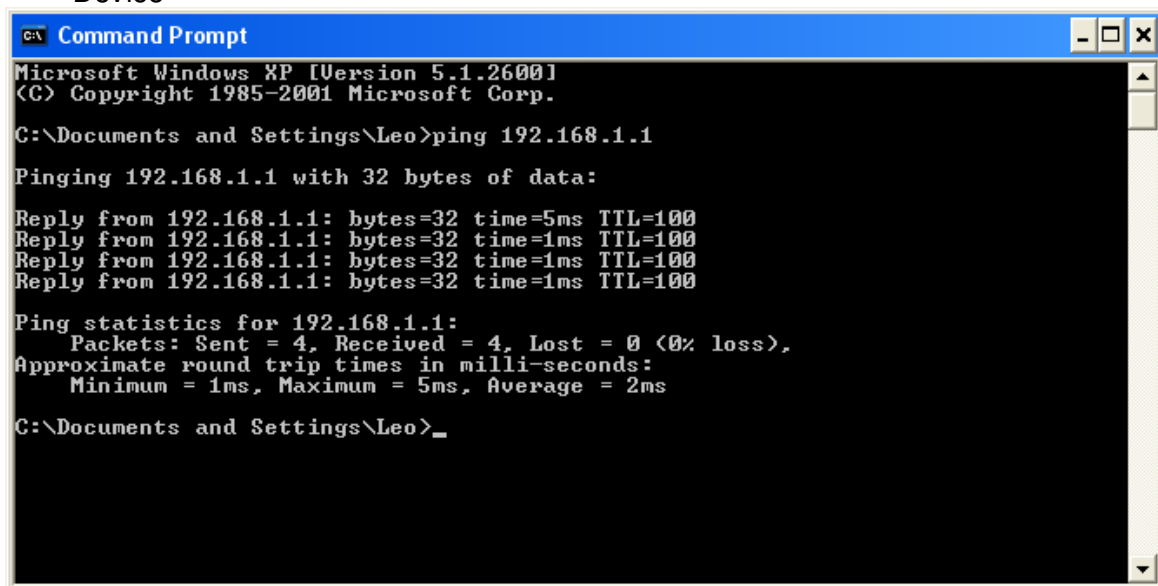
1. Right click on "Network" -> "Properties" -> "Internet protocol (TCP/IP)properties" on computer.
2. Assign fixed IP of 192.168.1.100/255.255.255.0 scope onto PC.



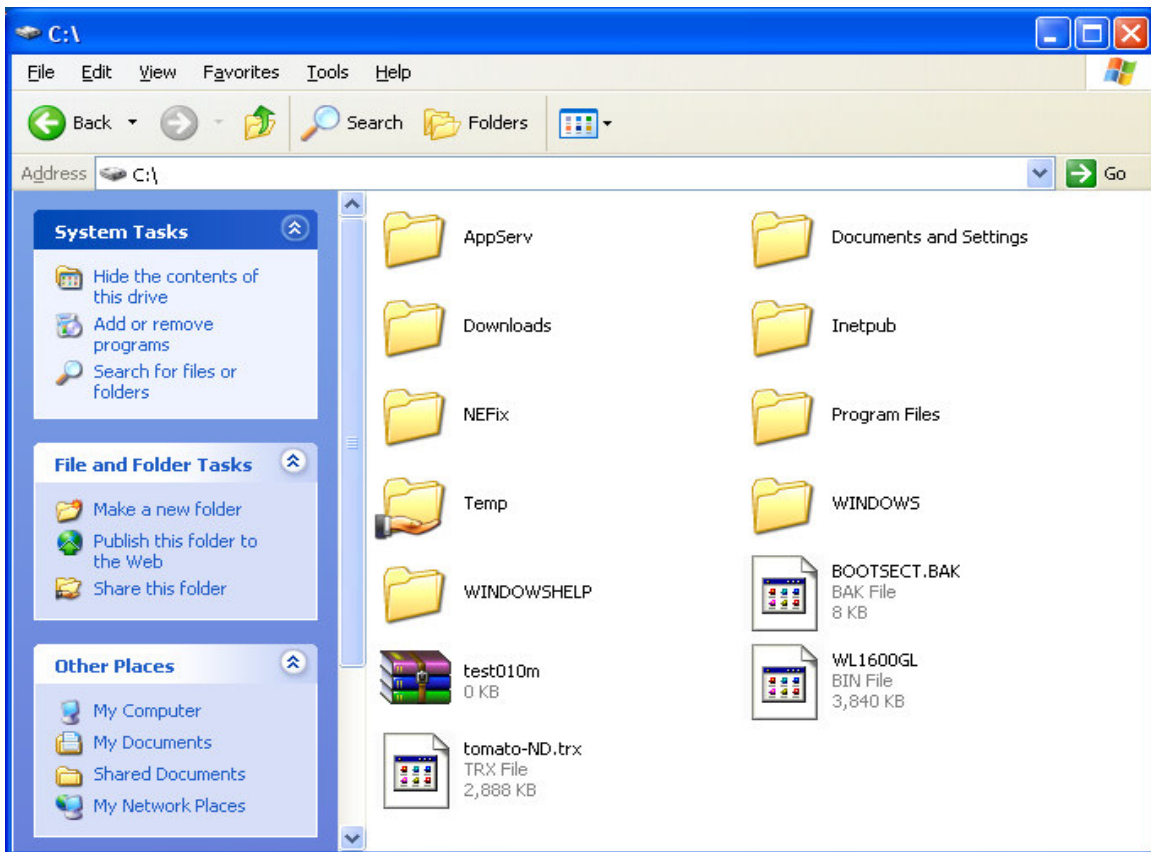
3. Press “Start”, press “run”, enter “cmd”, then press “enter”



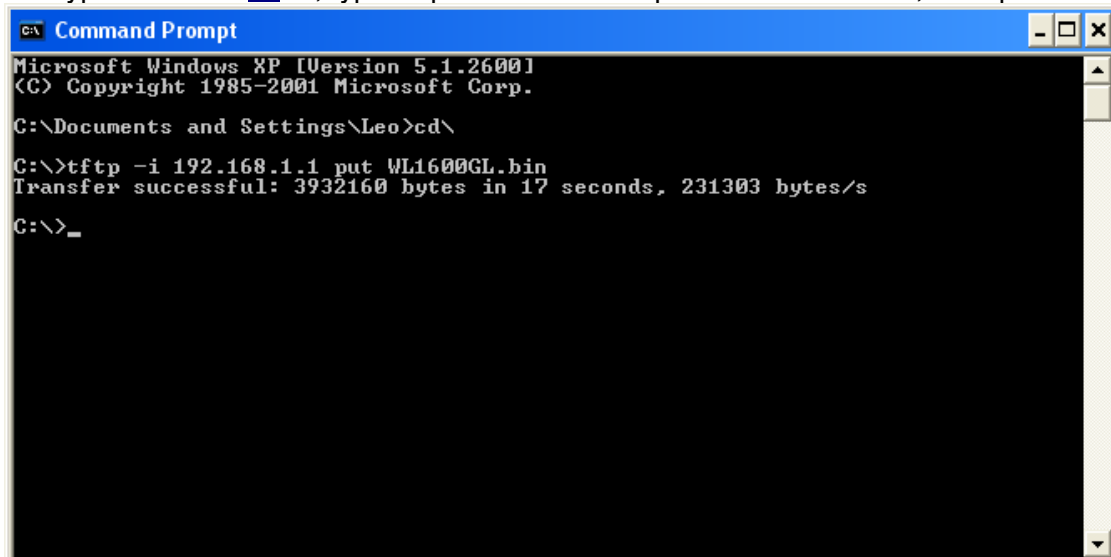
4. Ping the WL-1600GL tftp 192.168.1.1 , if no reply please retry “Operate on the Device”



5. Copy the WL1600GL to C:\



6. Type "cd\" into `c:\>` , type "tftp -i 192.168.1.1 put WL1600GL.bin", then press Enter



When return "Transfer successful: ** bytes in * seconds" your device receive data through TFTP client, please wait a few minutes. Device will update flash and then reboot itself.

WL-1600GL will return factory default